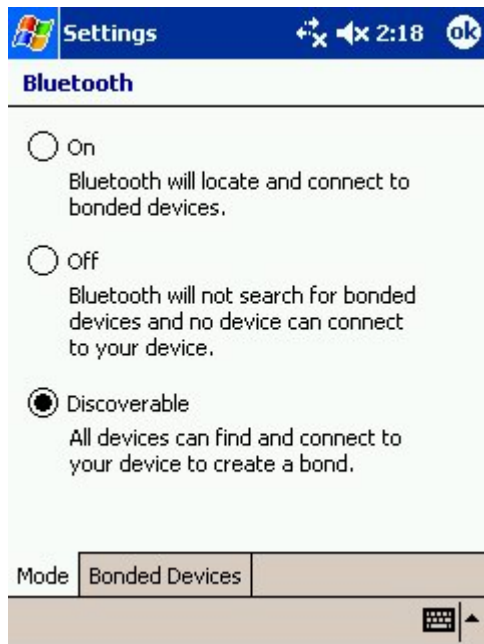
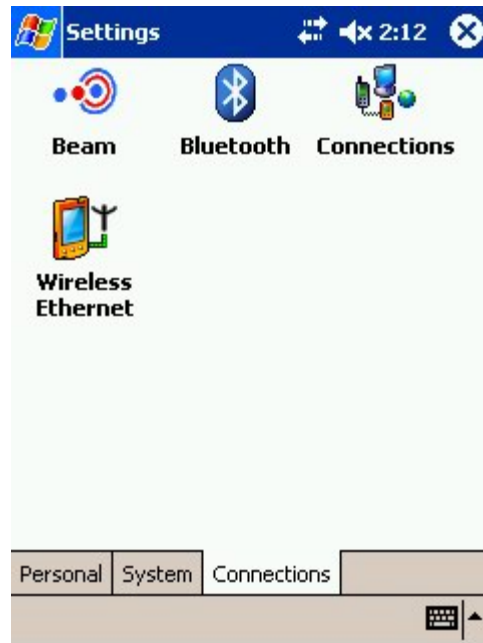


## B. Blue Tooth

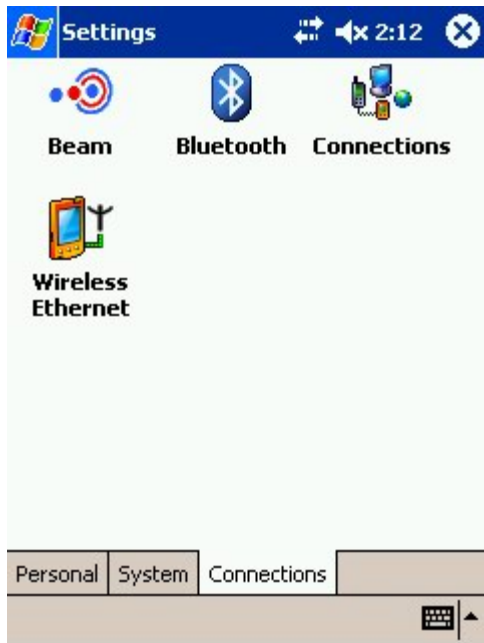
1. Tap the Mio Wireless icon , select "Blue Tooth" to enable the function



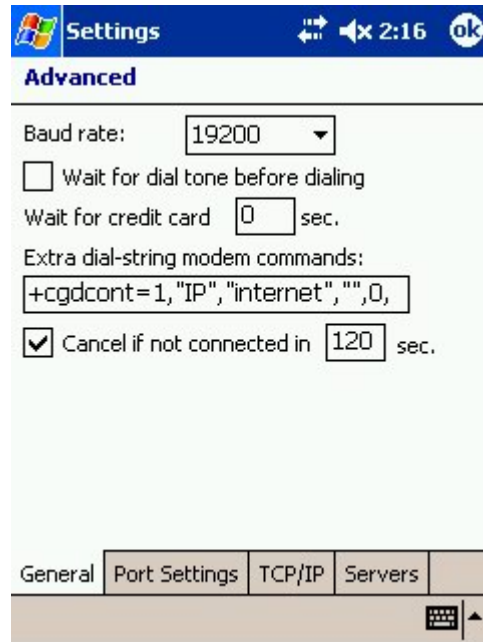
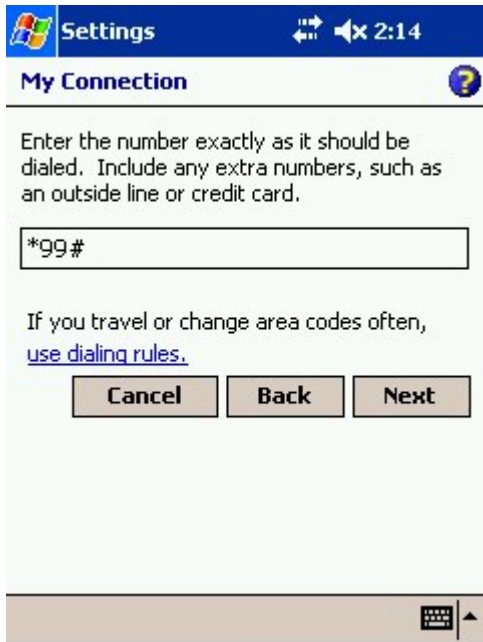
2. Tap "Start>>Settings>>Connections>>Bluetooth" , select "Discoverable"

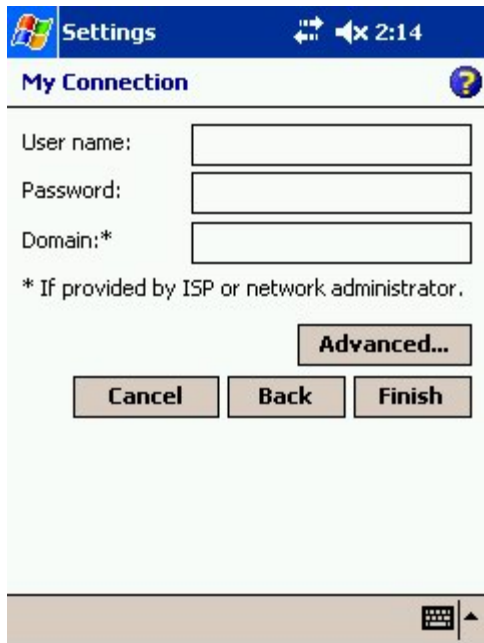


3. Tap "connections" , select My ISP "add a new modem conection" ,  
input the name of connection  
and select "Bluetooth" modem , tap "next"



4. Tap "New...." to search an bluetooth GPRS Phone , input the PIN to make connection
  - Input the dial number `"*99#"` , Tap "Advanced.." , disable the "wait for dial tone before dialing"
  - Input `"+cgdcont=1,"IP","internet",",,0,0""` in the "Extra dial-string modem commands"
  - tap "next" , blank all input , tap "finish"





5. Enable the bluetooth function in your Bluetooth GPRS Phone

Tap the connectivity icon , select the connection , blank all input , tap "finish" to dial

Now you can use the internet

