

A. IR Modem

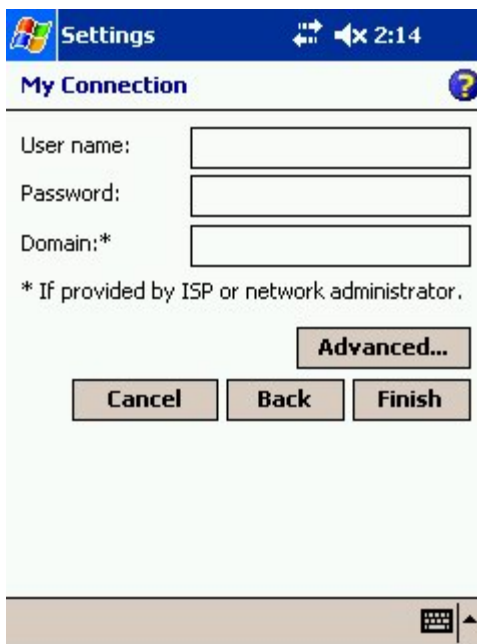
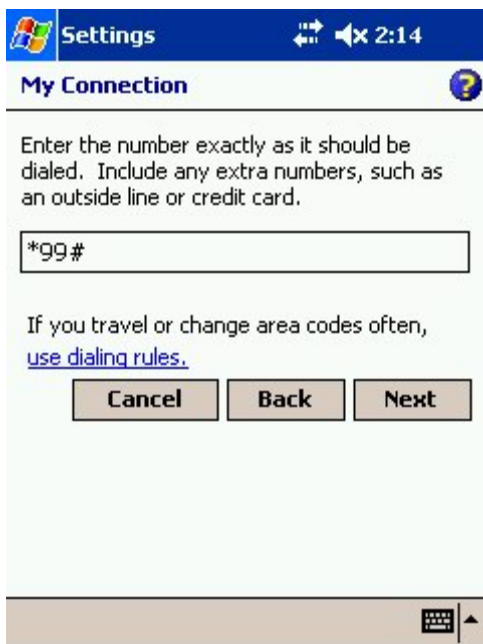
1. Tap "Start>>Settings>>Connections" , select "Connections"



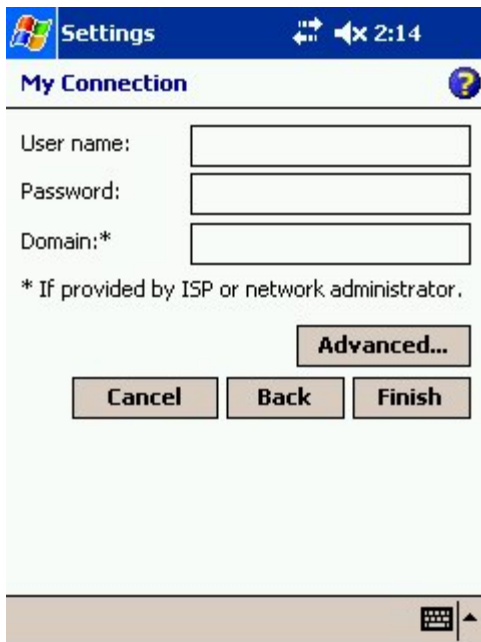
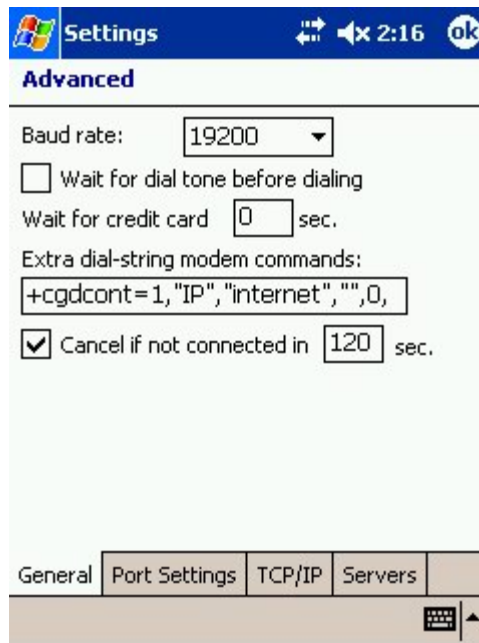
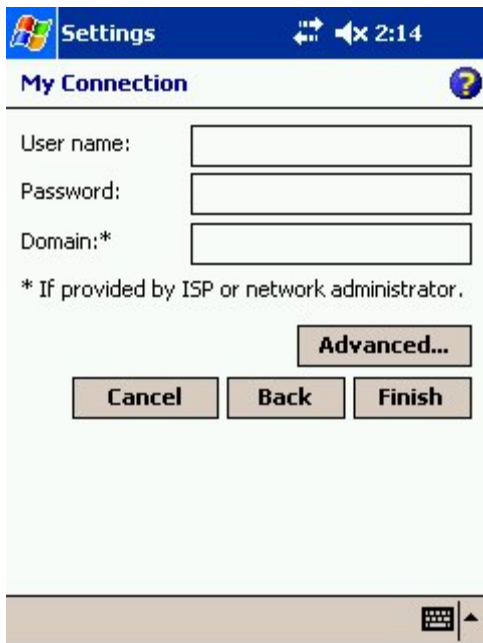
2. Tap My Isp "Add a new modem connection" , input the name for connection and select "Generic IrDA"



3. Input the dial number `"*99#" , then tap the "next" , blank the user name/password/domain`



4. Tap "Advanced.." , disable the "wait for dial tone before dialing"
 Input `"+cgdcont=1,"IP","internet",",",0,0"` in the "Extra dial-string modem commands"
 Tap "ok" to exit , then tap "finish" to done the settings .



5. Enable your GPRS phone's IR function , then direct the IR to 558's IR to make connection

Tap the connectivity icon , select the connection , blank all input , just tap the "finish" to dial

Then you can access internet .

